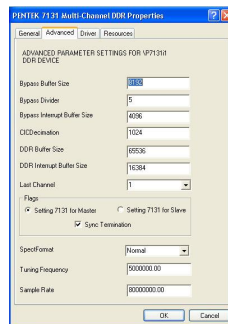


The Pentek **Drivers for Windows** provide developers with a complete library of hardware initialization, control and application functions for PMC modules. The drivers' high-level API, includes programming examples and data visualization tools to speed application development. Driver packages include both a C-language library as well as a familiar Windows Device Manager interface to allow developers the level of hardware access appropriate for their specific application.

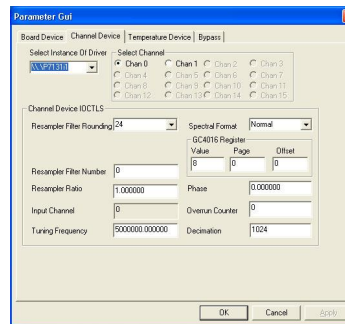
The drivers are designed to reduce development time, not only during the initial stages of software development, but any time new I/O hardware is added to

the system. PMC drivers, each designed to control the specific hardware features of the I/O interface being used, are built with a consistent style and function-naming convention. Similar parameters on different I/O modules have similar driver calls, thereby allowing immediate familiarity with hardware as it's added. This can greatly shorten the application development learning curve when a system is modified or expanded.

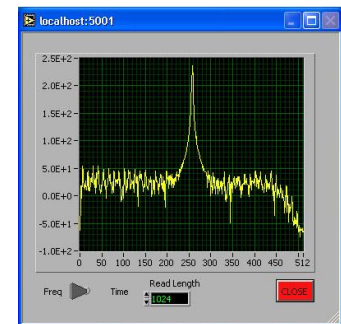
Shown here are screen shots of the **Receiver Control Interface**, the **Channel Control Interface**, and the **Data Visualization Tool**.



*Receiver Control Interface*



*Channel Properties Interface*



*Data Visualization Tool*

## Ordering Information

Model	Description
4995	Pentek Drivers for Windows