

## High-Speed Recording Systems

Talon® High-Speed Recording Systems eliminate the time and risk associated with new technology system development. With increasing pressure in both the defense and commercial arenas to get to the market first, today's system engineers are looking for more complete off-the-shelf system offerings. Out of the box, these systems arrive complete with a full-featured virtual operator control panel ready for immediate data recording and/or playback operation.

## Ready-to-Run Recording Systems

The Pentek offerings are fully integrated systems featuring a range of A/D and D/A resources or digital I/O with high-speed disk arrays.

These systems are built on a Windows workstation. Users can easily install post-processing and analysis tools to operate on the recorded data.

The recorded files are stored in the native Windows NTFS format, allowing them to be immediately used without the need for post-recording file conversion.

## Systems For All Your Recording Needs

Pentek's High-Speed Recording Systems are available as Lab Systems, Rugged Portable Systems, Rugged Rackmount, Extreme Systems, and Sentinel Systems.

**RTS Lab Systems** are housed in a 19-in. rack-mountable chassis in a PC server configuration. They are designed for commercial applications in a lab or office environment.

**RTV Lab Systems** are also designed for commercial applications in a lab or office environment. They provide outstanding performance for under \$20,000 US.

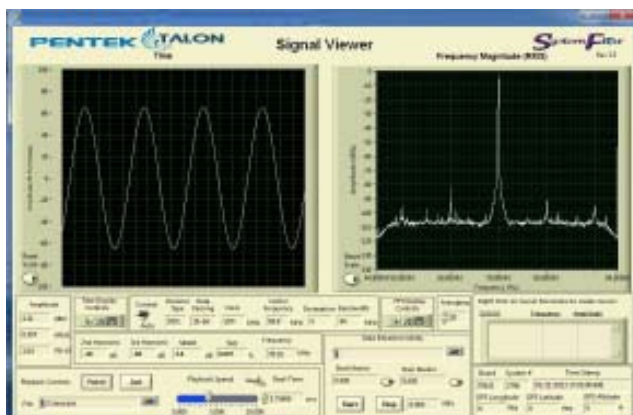
**RTR Rugged Portable Systems** are available in small briefcase-sized enclosures with integral LCD display and keyboard and weigh about 30 lb. They are designed for harsh environment field applications where size and weight is of paramount importance.

**RTR Rugged Rackmount Systems** are built to survive shock and vibration and they target operation in harsh environments and remote locations that may be unsuitable for humans.

**RTX Extreme Systems** are available in either a rackmount chassis designed to military specs, or a 1/2 ATR chassis. They are designed to operate under extreme environmental conditions using forced-air or conduction-cooling to draw heat from system components.

## SENTINEL

**Sentinel™ Recorders** add intelligent signal scanning with signal monitoring and detection for Talon real-time recording systems. Users can scan the entire available spectrum or select a region of interest. Selectable-resolution bandwidth allows for the trading of sweep rate for a finer resolution and better dynamic range. RF energy in each band of the scan is detected and presented in a waterfall display. Any RF band can be selected for real-time monitoring or recording. The Sentinel hardware resources are controlled through enhancements to Talon's SystemFlow® software package.



## SystemFlow

### SystemFlow Signal Viewer

The SystemFlow Signal Viewer includes a virtual oscilloscope and a virtual spectrum analyzer for signal monitoring in both the time and frequency domains. You can download and install the free SystemFlow Simulator to your desktop or laptop PC.



RTS Lab System



RTV Lab System



RTR Rugged Portable System



RTR Rugged Rackmount System



RTX Extreme Rackmount System



RTX Extreme 1/2 ATR System



<http://www.pentek.com/systemflow/systemflow.cfm>