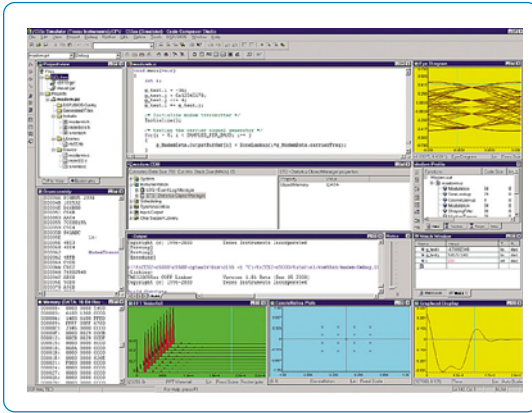


Model 4977 consists of **Code Composer Studio** packaged with **SwiftNet** Host Networking and Communication software. Code Composer Studio is a fully integrated development environment (IDE) which provides a



menu-driven graphical interface for the debugging and networking capabilities of SwiftNet. It integrates system debuggers, signal probes, and other tools into one Windows environment that supports TI's C6000 DSP processor family.

Aimed specifically at DSP development, this software package offers advanced features that allow designers to edit, build, debug, profile and manage

projects from a single unified environment. In addition, it lets users compile in the background and analyze signals graphically.

Code Composer Studio seamlessly interfaces to the numerous debugging and networking features of SwiftNet software. Networking and communication capabilities added by SwiftNet include access to multiple DSP chips on a single multiprocessor board, multiple workstation access to a single VMEbus card cage, simultaneous debugging of multiple processors by different users, and DSP development over the internet, intranet or networks.

Although the C6000 can achieve in excess of 5000 MIPS, the effective MIPS figure depends on the level of instruction parallelism and data throughput that can be achieved, which is determined by the software. The integrated profiler and other features in Code Composer Studio can help designers develop more complex, optimized code to fully exploit the resources of the C6000 for maximum performance.

Model 4977 provides a complete DSP developer's package, combining the essential tools of Code Composer Studio with SwiftNet's powerful connectivity and debugging capabilities. This software package presently supports Windows 98/NT/2000/XP for all Pentek C6000 processor boards. For more information on SwiftNet and its features, see Pentek Model 4945 SwiftNet Host Software.

Pentek embraces Texas Instruments' eXpressDSP™ real-time software development environment including such products as the DSP/BIOS and Code Composer Studio plug-ins.

DSP/BIOS is a scalable real-time kernel designed for C6000 DSPs and applications requiring real-time scheduling and synchronization. Its open plug-in environment makes Code Composer Studio easily adaptable to different development needs.

The **SwiftNet Debug Manager plug-in** provides seamless integration between Code Composer Studio and SwiftNet's debugging capability. The SwiftNet Debug Manager plugs into the Code Composer Studio setup program. It simplifies the setup process, allowing the user to specify all the processors in a system with user defined names. Based on the user's input, the plug-in adds the appropriate processor information into Code Composer Studio's setup allowing the software developer to open as many debug windows as DSPs in the system.

Once the hardware information has been entered using the SwiftNet Debug Manager, the **SwiftNet Project plug-in** determines all the project settings required by Code Composer Studio and passes these parameters to the program. Information like directories, linker command files, and compiler switch settings are automatically loaded, thereby allowing developers to start working immediately on the application.

Ordering Information

Model	Description
4977	Code Composer Studio with SwiftNet for C6000
Option:	
-100	Complete Package for Windows 98/NT/2000/XP (includes code generation and debugging tools)