

Model 4976 consists of **Code Composer** packaged with **SwiftNet** Host Networking and Communication software. Code Composer is a fully integrated development environment (IDE) which provides a

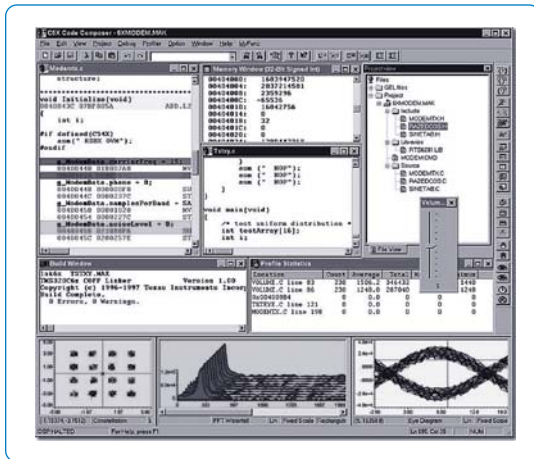
menu-driven graphical interface to the debugging and networking capabilities of SwiftNet. It integrates an optimizing C compiler, multi-processor debugger, signal probe and graphical analysis tool, and various other tools into one Windows environment which supports the C3x and C4x families of Texas Instruments DSPs.

Aimed specifically at DSP development, this software package offers advanced features that allow designers to edit, build, debug, profile and manage projects from a single unified environment. In addition, it lets users compile in the background and analyze signals graphically.

Code Composer seamlessly interfaces to the numerous debugging and networking features of SwiftNet software. Networking and communication capabilities added by SwiftNet include access to multiple DSP chips on a single multiprocessor board, multiple workstation access to a single VMEbus card cage, simultaneous debugging of multiple processors by different users, and DSP development over the internet, intranet or networks.

An additional benefit of Code Composer is its many graphing options including FFTs, waterfalls, eye diagrams, constellation diagrams and image displays, all useful for communications and imaging applications.

Model 4976 provides a complete DSP developer's package, combining the essential tools of Code Composer with SwiftNet's powerful connectivity and debugging capabilities. This software package presently supports Windows for Pentek C3x and C4x processor boards such as the Model 4285 Octal C40 board. For more information on SwiftNet and its features, see Pentek Model 4945 SwiftNet Host Software.



Ordering Information

Model	Description
4976	Code Composer with SwiftNet for C3x, C4x